

INTERNATIONAL

Metal Part Product Catalogue



Sheet Metal Parts

◆ Materials:

1. Mild steel, Zinc/Tin plated steel, Galvanized steel;
2. Stainless steel;
3. Aluminum sheet;
4. Copper/brass sheet...

◆ Size & Tolerance:

1. Min. thickness: 0.03mm, as small as you design;
2. Max. thickness: 10mm;
3. Max. size: 3000 x 2000mm;
4. Min. tolerance: +/-0.002mm;

☛ Finishing:

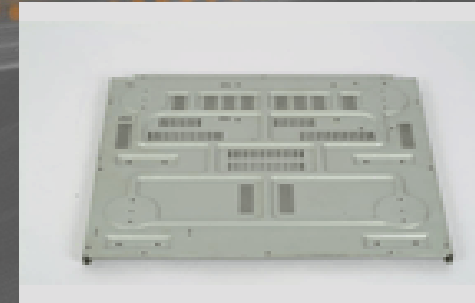
1. Oil/Powder coating;
2. E-coating: zinc plated, nickel plated, tin plated, flash copper...
3. Anodizing with different colors;
4. Serigraphy...

Sheet Metal Parts

- ◆ Major Application:
 - Panels



- Chassis



Sheet Metal Parts

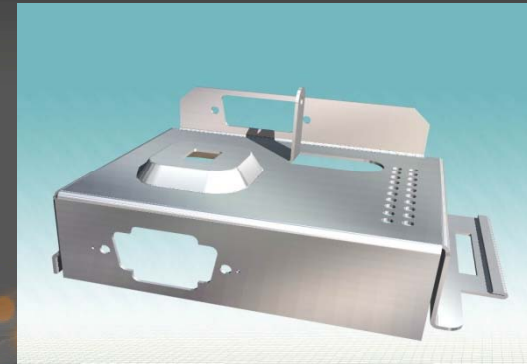
◆ Major Application:

- Metal Boxes / Setup Boxes / PC Boxes

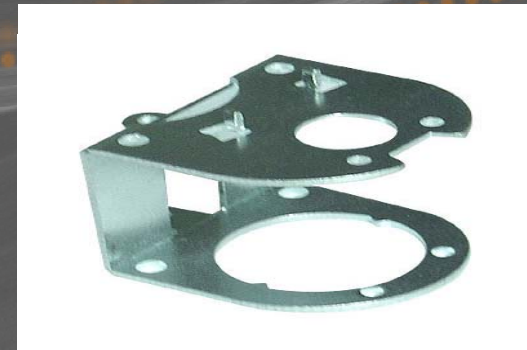


Sheet Metal Parts

- ◆ Major Application:
 - Terminal and contactor

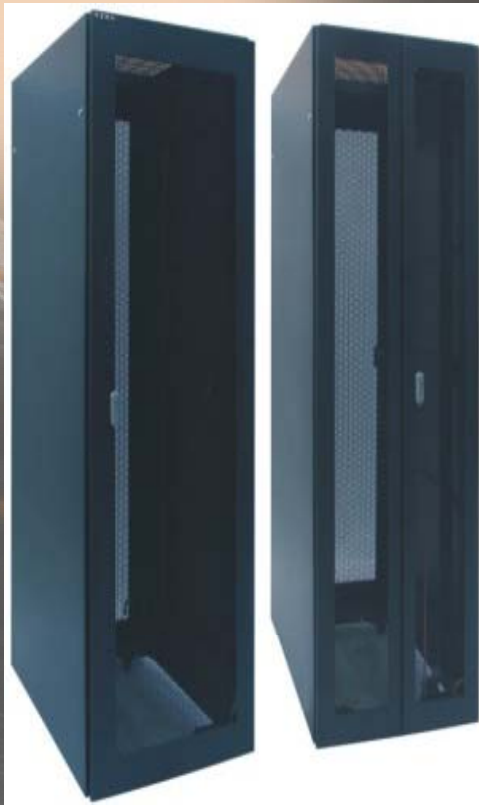


- Other application



Sheet Metal Parts

- ◆ Major Application:
 - Cabinet



Heat Sink

◆ Materials:

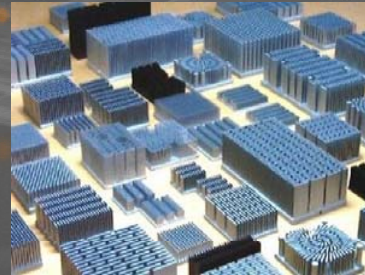
1. Aluminum profile;
2. Aluminum/copper pipe.

☞ Size & Tolerance:

1. Max. section width: 3000mm;
2. Min. tolerance: +/-0.01mm.

☞ Finishing:

1. Machining as required;
2. Anodizing with different colors.



Casting Metal Parts

◆ Material:

1. Aluminum Alloy (ADC10/12, A380, A360, AS9U3, AS12U, ASM7..)
2. Zinc Alloy: ZAMAK #3, #5
3. Magnesium Alloy: AZ91D

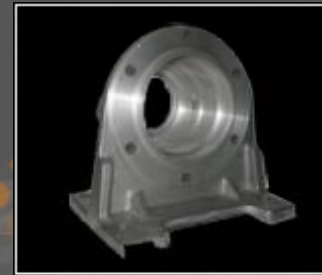
◆ Finishing:

1. Machining as required;
2. Anodizing with different colors;
3. Oil/Powder coating.

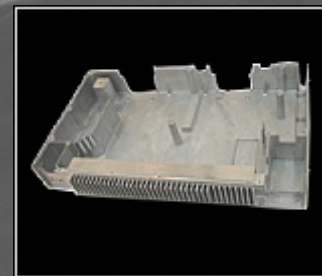
Die-casting Parts

◆ Major Application:

1. Automotive:



2. Telecommunication



Die-casting Parts

3. Household appliance



4. Lighting



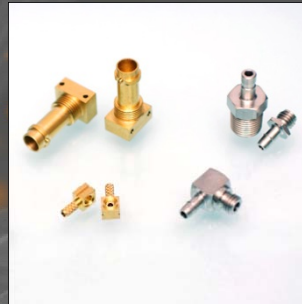
Machining Parts

- ◆ Parts machining from rough material which in round style or some special type directly.
- ◆ Material:
 - Cu (ASTM: C36000.....)
 - Al (60X, 70X, 20X, 40X...)
 - Steel (Stainless Steel, Carbon Steel, Alloy Steel....)
 - Iron (1215....)

Machining Parts

◆ Major Application

Electronic, Mechanism, Measurement, Medical machine...



Contact us

- **Hong Kong Office:**

- Address: Unit 1001, Fourseas Building 208-212,
Nathan Road, Kowloon, Hong Kong

- Tel: 00852-3426 3738

- Fax: 00852-2783 7978

- **Mainland Office:**

- Address: Room 4B, Building 11#, Zhonghui Shanpan Mingcheng,
ChangAn Town, Dong Guan City, Guangdong Province, P. R. China

- Tel: 0086-769-81761039

- Mobile: 0086-159 9982 6734

- Fax: 0086-769-81761039

- **Website:** www.pa-international.com.au

- **E-mail:** sales@pa-international.com.au

